



# Flight Training Program

Getting started into a flying career.





# WHAT MAKES US DIFFERENT?



*Deciding on a flight training school is one of the most important decisions you will ever make. Not only is it a significant financial decision, but it will lay the foundations for the skills you will need to enter the industry, or to step-up within the industry. Flying requires significant discipline, coordination and commitment, however, it is an enormously satisfying challenge. In choosing a flight school it is important to assess a wide range of aspects. Some factors may be obvious, while others may be some you never previously considered. When assessing if a flight school is right for you, consider the following:*

## Size Matters

Large flight schools do not offer the personalized touch that smaller schools do. They might run as a well oiled machine, but that is exactly what they are – a machine. Heli Aviation offers personalized training where you work one-on-one with your instructor. Our size means we offer the flexibility in timing and training to suit your needs. No group lessons, no line for flight time – what you want, when you want it! You will also have closer contact with lead flight instructors. These are industry experienced pilots, not someone who has spent their entire career at the same school.

## Industry Connections

Heli Aviation is not only a flight school, but a Utility helicopter company as well. Which means we're connected to the industry through a wide range of operations, allowing us to link students with multiple companies within the industry. Given our diverse industry connections, we have a very high success rate for students gaining jobs within the industry. Training at a stand-alone flight school reduces your future job prospects!

## Industry Experience

It is important that the training you get is relevant to industry standards. Many flight schools will only train you to the minimum standard set by the FAA (PTS). Our lead instructors are also operational pilots, providing students real world training right from the Private Pilot level through to advanced courses. Our courses are designed by experienced industry professionals and constantly evolving over time to deliver a level of training well above that required to simply pass a check-ride.

## Excessive Costs

Beware of smart advertising and excessive costs. Most flight schools will assign costs based on "their" opinion, which is not always correct. We quote based on "FAA Minimums" so you see what it really

costs to get you from "zero-to-hero". We also provide you with statements of what past candidates graduated with, so you have an understanding of what additional costs may apply. Those hours are all dependent on your flying skills and personal learning abilities. The more you study and repeat tasks at home, the higher the chance for you graduating within FAA Minimums. There are also lots of additional fees that other flight schools don't mention to you. For example: We do NOT charge fuel surcharges. This is the first sign of hidden costs. We do NOT charge landing fees. We do NOT charge Pre-/ Post-flight fees. We customize our quotes to each candidate, based on their previous experience (if any), so you only pay for the training you NEED! We have no hidden charges and will provide an honest assessment of what you will need, and how much it will cost. We also offer discount rates for cash and check payments in advance.

## Aircraft Type

It is important that you train in an aircraft that is designed for flight training, and that is heavily utilized within the entry-level job market of the industry; otherwise you are wasting money. Be cautious of operators advertising scarce models (i.e. Guimbal, Schweizer) claiming the helicopter type is 'modern', or similar to models widely used within the charter and utility industries. What this fails to consider, is that low-time beginner helicopter pilots have limited employment options initially, and will not be able to find employment if their flight experience is on aircraft not dominantly used within the entry-level job sector of the industry. Initial training should reflect experience in models that offer entry-level employment opportunities (i.e. Robinson R22 & R44 models). Heli Aviation offers a diverse fleet of Robinson, Bell and McDonald Douglas helicopters for standard courses, transition and various advanced training. Our fleet comprises of models heavily used within all sectors of the helicopter industry (entry-level employment, private sector, government and utility), ensuring that experience gained will provide the highest opportunities for employment.

## Job Placement

Flight training is an investment, and where you choose to train will affect your expected return. Heli Aviation is constantly hiring from within its own training students, and actively helping to place pilots with outside employment opportunities as well! The true key to initial success is gaining industry relevant experience; this means being trained to fly aircraft models used for flight training, tour operations and light-utility industry work, as these areas will be actively hiring beginner pilots.



# THE NO. 1 FLIGHT TRAINING PROVIDER NATIONWIDE



MARTIN O. (Switzerland)

Heli Aviation truly made good use of my Money and time building goals. Within 5 weeks I had completed my Private & Commercial Ratings; they respect your time and your costs, great school!



CLARENCE L. (Sweden)

I had wasted thousands of dollars, and more than a year at other flight schools, and had no license to show for it. Heli Aviation gave me the guidance to get me focused and motivated again and finally got my ratings done!



CHARLY G. (Switzerland)

Heli Aviation seems more like a family, than a flight school. I'm a long returning student, who most recently achieved my Instrument rating within 4 weeks. They perform at a higher standard than other flight schools.



BERNHARD E. (Austria)

My friend and I arrived with the intention to earn our Private & Commercial rating in 6 weeks. Most schools could never accommodate those needs, but Heli Aviation did. Mission accomplished!



HERMANN D. (Austria)

Heli Aviation was completely flexible with my unique schedule, and accelerated goals. Received my Private & Commercial within 6 weeks. Every time I had a question, or needed assistance, someone was there for me.



TIM T. (Germany)

As a captain with Lufthansa, I demand competency and quality. Heli Aviation encompasses both of these traits, and they helped me earn my ATP rotorcraft rating. Brilliant staff, pristine facility, and genuine passion for their rotorcrafts.



MARKUS B. (Switzerland)

In Switzerland, I am an aviation accident investigator. Heli Aviation's staff understands the importance of details and safety; this is truly a quality facility. Within 4 weeks I had my Private license, and new friends to enjoy the experience with—Top notch flight school.



JOHN M. (United States)

I've been a long time customer of Heli Aviation. They've allowed me the time necessary to obtain my Private through ATP licensing, while still balancing my demanding professional life. Thanks again for all your support!

# OUR GOAL: EXCEEDING YOUR EXPECTATIONS



BRIAN M. (United States)

Before I started flying at Heli Aviation I didn't realize how priceless the experience I was receiving as a student. The kind of operations we used to conduct there teaches you all the necessary skills you need as a "real-world" pilot. [...]



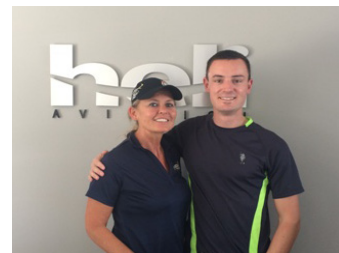
COLIN J. (Norway)

I have achieved my Private Pilot License within 3-weeks. The first week was probably the most difficult one because I had to pass the written test to be able to focus on the oral and flight portion for my checkride.



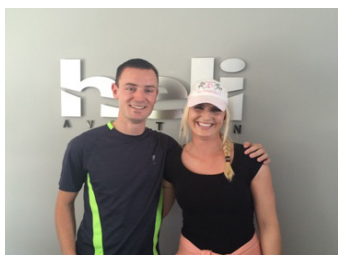
CHARLY G. (Switzerland)

[...] I was not expecting to meet such a young team of well qualified instructors and enjoyed every minute of my training with Heli Aviation. I was very surprised about the great support even beyond my flight training.



KARIN B. (Switzerland)

The flight school's owner worked with me exclusively to help me reach my personal deadlines. He also made sure that I trained in accordance with the Swiss aviation regulations in order to convert my FAA license to EASA.



ANNETTE S. (Switzerland)

I attended Heli Aviation for only one month to earn my Private Pilot License. It has been a great experience from day one. They have great staff members and very knowledgeable pilots to train you and get you where you want to be.



FRANZ H. (Germany)

From my first intro flight, the flight instructors at Heli Aviation have been professional and extremely flexible to fit my training in between my busy travel schedule. They have continued to make flight training truly enjoyable and we got everything done within the allotted time.



FRANCK M. (France)

Heli Aviation has given me the opportunity to receive a higher caliber of professional flight training in a great location like Sarasota that gives you experience in an international airspace and sunny days year round to keep training moving quickly. Thank you guys!




CHRISTIAN K. (Austria)

The atmosphere and environment provided by the staff and CFI's consistently maintained the utmost level of professionalism, always keeping safety a top priority. Lessons were concise and well integrated during the entire training. I highly recommend Heli Aviation.

# TIME IS MONEY: PRIVATE PILOT IN 4-WEEKS



 This course was designed for people that normally wouldn't have the time to get a private pilot license. By taking our 4-week total immersion flight training program, you will learn everything you need to know to get your private pilot certificate. For the entire four weeks your focus will be directed to flying. This course was designed under the consideration of previous flight training applicants average finishing times, ultimately helping us determine a realistic time frame necessary to complete the course.

Due to the unique time constraints of this program, we don't expect you to solo until the second week, however, we'll work hard and push you to your limits to achieve your daily goals. While we can't absolutely guarantee your completed certificate in three weeks, as student skills and personal learning ability vary from person to person, and external factors like weather conditions are somewhat beyond our control. Regardless, if you require more time to finish your certificate, we will work with you as long as it takes to become a private pilot if you show the motivation and desire to work with your instructor. All additional or extra training time will be billed separately to the regular published rates.

## WHAT YOU'LL LEARN

How to Fly Solo  
Night Flying  
Cross-Country Navigation  
Basic Helicopter Operations  
Airport & Heliport Operations  
Radio Procedures  
And So Much More...

### COURSE PREREQUISITES

- 1.) Be at least 17 years of age.
- 2.) Able to read, speak & understand the English language.
- 3.) Hold at least a 3rd Class Medical with Student Pilot Certificate.
- 4.) Weight does not exceed 230 lbs.

### COURSE REQUIREMENTS


30 hrs Dual Training in a Robinson R22  
10 hrs Solo Training in a Robinson R22  
25 hrs Ground Instruction

### EST. COURSE DURATION

Approx. 4 Weeks  
(\* *Depending on weather and student flying skills.*)

# FLY FOR FUN & RECREATION: THE PRIVATE PILOT CERTIFICATION



 *Your Private Pilot Certificate lets you fly helicopters for fun and recreation—giving rides to friends and family or flying for your own transport. It's the first step toward building the skills needed for your Commercial Pilot Certificate. You'll be in the cockpit from day one, getting hands-on experience.*

This course is the first step for every pilot. You learn how to safely conduct basic flight maneuvers and proper aeronautical decision making. After safely demonstrating selected maneuvers and sound judgment in the aircraft, you get to do something you will remember for the rest of your life; fly solo for the first time. Every detail of that experience will be vivid in your memory from what the weather was like to how the aircraft felt when you looked over and realized your instructor's seat was empty. Soloing in a helicopter is an experience not many people have achieved and it is something to be proud of. During the next phase of your training, you will take the helicopter on cross-country flights. Heli Aviation's headquarter is uniquely positioned in Sarasota, Florida, and Broomfield (Denver), Colorado. Once you have completed the solo and cross country requirements, you will take the FAA practical test also known as a check ride with an FAA-designated examiner (DPE). When you successfully complete the checkride, you will be a private pilot! The FAA minimum hour requirement for a Private Pilot Certificate is 40 hours of flight training. However, we can't guarantee a specific minimum for completion—everyone learns at a different rate.

## COURSE PREREQUISITES

- 1.) Be at least 17 years of age.
- 2.) Able to read, speak & understand the English language.
- 3.) Hold at least a 3rd Class Medical with Student Pilot Certificate.
- 4.) Weight does not exceed 230 lbs.

## COURSE REQUIREMENTS

30 hrs Dual Training in a Robinson R22  
10 hrs Solo Training in a Robinson R22  
25 hrs Ground Instruction

## EST. COURSE DURATION

Approx. 5-8 Weeks  
(\* *Depending on weather and student flying skills.*)


## WHAT YOU'LL LEARN

How to Fly Solo  
Night Flying  
Cross-Country Navigation  
Basic Helicopter Operations  
Airport & Heliport Operations  
Radio Procedures  
And So Much More...



# GET PAID TO FLY: THE COMMERCIAL PILOT CERTIFICATION



 *If you want to get paid to fly, you need your Commercial Pilot Certificate. This course expands on private pilot training and introduces more advanced maneuvers and skills. This training course teaches you to fly to higher and more precise standards to prepare you for your first commercial job.*

During the commercial portion of your training, we continue to refine your skills and help you learn more advanced flying techniques so you will be prepared for that first commercial job. When you first start your commercial training, we work on building your experience flying to different locations and airports so you become comfortable flying into new areas. This experience will be valuable when a future boss asks you to move an aircraft to a new location, and you are able to safely and efficiently handle this. The latter part of your commercial training focuses on refining your flight knowledge and abilities so that you will not only get hired for your first pilot job but have the skills to keep it. You will learn advanced autorotation techniques, different ways to do off-airport landings and a higher level of helicopter control necessary to be a safe commercial pilot.

Ask us about the combined commercial/instrument course that can increase your efficiency during this training and save you up to \$10,000 at the completion of both ratings.

## WHAT YOU'LL LEARN

How to Fly Professionally  
Advanced Aerodynamics  
Commercial Rules & Regulations  
Helicopter Power Management  
How to Use Good Judgment  
Pinnacles & Confined Areas  
Additional Specialized Skill Modules  
And So Much More...

### COURSE PREREQUISITES

- 1.) Hold at least a Private Pilot Certificate.
- 2.) Be at least 17 years of age.
- 2.) Able to read, speak & understand the English language.
- 3.) Hold at least a 3rd Class Medical.
- 4.) Weight does not exceed 230 lbs.

### COURSE REQUIREMENTS

40 hrs Dual Training in an Robinson R22  
5 hrs Dual Instrument Training  
55 hrs Solo Training in an Robinson R22  
20 hrs Ground Instruction

*\* Flight times are based on 50 hrs previous flying experience. Additional hours may be credited towards this rating.*


### EST. COURSE DURATION

Approx. 4-8 Weeks  
*(\*) Depending on weather and student flying skills.*



# INCREASE EMPLOYABILITY: THE INSTRUMENT RATING



 *The Instrument Rating is becoming more prevalent in the helicopter industry as new aircraft applications are realized. Regardless of whether you fly in actual instrument conditions or not, the Instrument Rating will give you the tools and knowledge you need for a safe career as a professional pilot.*

At Heli Aviation, we utilize Robinson R22 and R44 instrument-equipped aircraft to develop the skills that you will need for instrument proficiency. The weather in Florida provides year-round great opportunities for pilots to recognize the conditions that necessitate the helicopter Instrument Rating. We break the instrument training into two stages. In stage one, you will learn how to maintain a given altitude, airspeed and direction using only information from the instruments inside the cockpit. Practicing emergency procedures in simulated instrument meteorological conditions (IMC) and learning what to do if one of the instruments you are relying on fails is key during this course. In stage two, you practice taking off in simulated IMC while only referencing your instruments. During this part of the training, you go to a variety of airports to practice different types of approaches. We have many local airports that offer a myriad of instrument approaches giving you a large amount of experience without having to travel far.

Once you and your instructor feel that you have the required skills for the instrument course, you will take your checkride.

## COURSE PREREQUISITES

- 1.) Hold at least a Private or Commercial Pilot Certificate with Rotorcraft category/class rating.
- 2.) Able to read, speak & understand the English language.
- 3.) Hold at least a 3rd Class Medical.
- 4.) Weight does not exceed 230 lbs.

## COURSE REQUIREMENTS

40 hrs Dual Training in an R22 or R44  
25 hrs Ground Instruction

## EST. COURSE DURATION

Approx. 4 to 6 Weeks

(\*) Depending on weather and student flying skills.

## WHAT YOU'LL LEARN

How to Fly by Instruments Only

Basic Attitude Flying

Advanced Approaches


Instrument Cross Country Procedures

Flying in Challenging Weather

And So Much More...

# YOUR FIRST CAREER STEP: THE FLIGHT INSTRUCTOR RATING



 *Your first career step is likely to be working as a flight instructor. The Certified Flight Instructor (CFI) Rating is required if you want to instruct other pilots. Heli Aviation takes pride in our ability to share our vast experience during the CFI course which will set you apart from the competition.*

Once you have your Commercial Pilot Certificate, it's time to start thinking about your first paying job as a helicopter pilot which for most people is working as a certified flight instructor. Many people choose this path because they want an opportunity to pass on the skills and knowledge they received during their training to a new student and in the process improve their own understanding. During this training course you will learn the fundamentals of instruction, including how to teach ground training topics and flight maneuvers while also learning how to appropriately respond to student's actions in flight. During the flight portion, you will learn how to teach flight skills and maneuvers effectively and efficiently to your students. Learning common student pitfalls and how to avoid them is also covered in your training. By employing scenarios, real-world situations and knowledge from our most senior instructors, you will learn how to use this information to best educate your students. Even though, there are no required FAA flight minimums, generally, the flight time for the CFI is the difference between your flight time on earning a CPL and 200 hours of total time, which is required for those who want to instruct in a Robinson R22.

## WHAT YOU'LL LEARN

How to Provide Flight Training  
How to Provide Ground Training  
Common Student Mistakes & How to Correct Them  
How to Instruct, Evaluate & Motivate Effectively  
And So Much More...

### COURSE PREREQUISITES

- 1.) Hold at least a Commercial Pilot Certificate with Rotorcraft category/class rating.
- 2.) Able to read, speak & understand the English language.
- 3.) Hold at least a 3rd Class Medical.
- 4.) Be at least 17 years of age.
- 5.) Weight does not exceed 230 lbs.

### COURSE REQUIREMENTS


20 hrs Dual Training in an Robinson R22  
15 hrs Ground Instruction

### EST. COURSE DURATION

Approx. 3-4 Weeks  
(\* ) Depending on weather and student flying skills.

# GET MORE OPPORTUNITIES: THE FLIGHT INSTRUCTOR -*INSTRUMENT*- RATING.



 *This course builds on our Certified Flight Instructor Rating by allowing you to teach instrument flight in helicopters. Since most pilots' first job is working as a certified flight instructor, this Certified Flight Instructor Instrument (CFII) Rating provides you with additional instruction opportunities.*

Once you have your CFI, you should consider a way to make yourself competitive in the job market and that will give you the most opportunities in the future. A CFII Rating will allow you to teach new instrument pilots the critical skills of flying by reference only to instruments. During this training course you will build upon your understanding of the fundamentals of instruction. You will learn how to teach instrument ground and flight maneuvers while learning how to help your future students do this in the most efficient manner. You will learn how to achieve high levels of learning by employing scenarios, situations and knowledge from our experienced instructors.

The number of hours to obtain this rating will depend on your instrument proficiency.

## WHAT YOU'LL LEARN

How to Provide Instrument Flight Training  
How to Provide Instrument Ground Training  
Common Student Mistakes and How to Correct Them  
How to Instruct, Evaluate & Motivate Effectively  
And So Much More...

### COURSE PREREQUISITES

- 1.) Be at least 17 years of age.
- 2.) Able to read, speak & understand the English language.
- 3.) Hold at least a 3rd Class Medical.
4. Hold a current FAA Flight Instructor Rotorcraft Certificate.
5. ) Weight does not exceed 230 lbs.

### COURSE REQUIREMENTS

20 hrs Dual Training in an Robinson R22  
10 hrs Ground Instruction


### EST. COURSE DURATION

Approx. 2 Weeks  
(\* ) Depending on weather and student flying skills.



# FLYING TO HIGHER STANDARDS: AIRLINE TRANSPORT PILOT



 To fly transport helicopters, you need the highest level of aircraft pilot certification—the Airline Transport Pilot Certificate (ATP). When you get this certification you can pilot aircraft in a carrier service with max gross weight of over 12,500 pounds and/or over nine passengers. This certificate can give you a leg up when applying for jobs.

Pilots in this course will learn ground topics critical to advanced pilots. These topics include advanced meteorology, meteorological hazards, advanced navigation systems, advanced instrument procedures, aircraft performance, advanced aerodynamics, human factors, aeronautical decision making and most importantly crew resource management. In the flight portion, students will refine their instrument approach skills to the high level of precision required for this course.

You need at least 1,200 hours of flight time to get this certificate as well as other requirements specified in the regulations. Most students have a specific situation for this course, and our experts can advise and tailor a course to best help each student achieve their goal effectively and efficiently. The practical test for this certificate is the pinnacle for any aviation professional.

## WHAT YOU'LL LEARN

Advanced Ground Topics  
Crew Resource Management  
Advanced Instrument Flight  
And So Much More...

### COURSE PREREQUISITES

- 1.) Hold at least a Commercial Pilot Certificate with Rotorcraft category and instrument rating.
- 2.) Be at least 23 years of age.
- 3.) Able to read, speak & understand the English language.
- 4.) Hold at least a 3rd Class Medical.
- 5.) Weight does not exceed 230 lbs.

### COURSE REQUIREMENTS

- 3 hrs Dual Training in a Robinson R22
- 3 hrs Ground Instruction

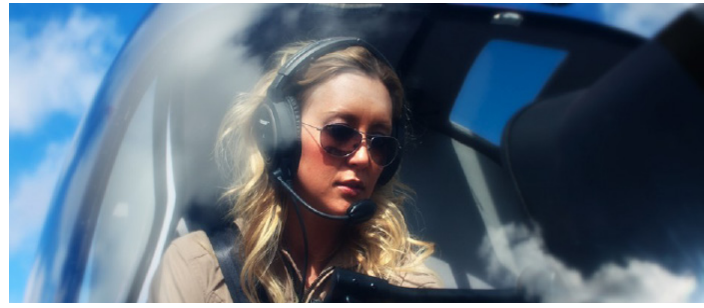
**NOTE: The ATP preparation training usually takes 10 hrs of Dual Training. However, 3 hrs are minimum in order to receive an instructor sign-off.**

### EST. COURSE DURATION

Approx. 1-2 Weeks

(\*) Depending on weather and student flying skills.

# FINANCIAL AID: FLIGHT TRAINING FINANCING



We have plenty of financing options to help you pay for flight school. The cost of flight training doesn't need to prevent you from becoming a professional pilot. From private loans to pay-as-you-go options, you're sure to find something that works for you. In addition to the options listed below, Heli Aviation's students have access to two different lenders to finance their training.

## Loan Benefits:

- 1.) Loan Amounts for Up To the max. Cost of the Program (\*)
- 2.) Competitive Annual Percentage Rates
- 3.) Flexible Repayment Options

(\*) Loans are available to those who qualify. Our admissions team would be happy to provide you with additional information about these financing options and answer any questions.

## AOPA FINANCING

Another way to finance your flight school experience is through the Aircraft Owners and Pilots Association. They offer multiple financing options that are easy, affordable and flexible. The approval process takes just 24 hours and we try hard to find a way to get every application approved. For more information visit: <https://finance.aopa.org/landing-pages/flex-aviation-loan>

## PILOT FINANCE

Their easy, affordable programs are for part-time private pilot training courses and instrument ratings only. You won't need to win the lottery, watch your credit card balance climb or drop out because costs are adding up. With a \$250 down payment and monthly payments of \$200 - \$300 you can realize your dream of becoming a pilot. For more information visit: <https://www.pilotfinance.com/application-form/>

## PAY-AS-YOU-GO

Many flight schools make you deposit a chunk of money up front, but Heli Aviation lets you start training right away and pay for lessons as you go. You'll be required to pay the balance when you complete each flight lesson and that means you can get creative and work your way through school.

# DO WHAT YOU LOVE, ITS NEVER TOO LATE! FLIGHT TRAINING PRICING



CASH DOWNPAYMENT DISCOUNTS AVAILABLE

## CHARTER RATES & FEES

Robinson R22 Helicopter	\$ 245/ hr
Robinson R22 Helicopter (IFR Trainer)	\$ 265/ hr
Robinson R44 Helicopter	\$ 475/ hr
Bell 206 L-3 Helicopter	\$ 900/ hr
MD 500 Helicopter	\$ 825/ hr
MD 600N Helicopter	\$ 950/ hr
Flight & Ground Instruction	\$ 50/ hr
Advanced Flight Instruction	\$ 65/ hr
Utility Equipment Rental (Longline, etc.)	\$ 200/ hr
FAA Computer based written test	\$ 150
FAA Checkride Examiner Fee	\$ 700-950

## INITIAL HELICOPTER TRAINING RATES

### PRIVATE PILOT CERTIFICATE (Initial)

40 hrs aircraft charter Robinson R22	\$ 9,800
30 hrs flight instruction	\$ 1,500
25 hrs ground instruction	\$ 1,250
FAA Written Examination Fee	\$ 150
Checkride Examiner Fee	\$ 600
<b>Estimated Total</b>	<b><del>\$13,300</del> or \$ 12,900 pre-paid!</b>

*PPL based on no previous flying experience. If you have logged any rotorcraft flight hours in the past, we may count those towards this rating.*

### COMMERCIAL PILOT CERTIFICATE (Initial)

95 hrs aircraft charter Robinson R22	\$ 23,275
5 hrs aircraft charter Robinson R22 (IFR)	\$ 1,325
40 hrs flight instruction	\$ 2,000
20 hrs ground instruction	\$ 1,000
FAA Written Examination Fee	\$ 150
Checkride Examiner Fee	\$ 600
<b>Estimated Total</b>	<b><del>\$28,350</del> or \$ 27,850 pre-paid!</b>

*CPL based on 50 hours previous flying experience and valid FAA Private Pilot Rotorcraft rating. Additional rotorcraft hours may be credited towards this rating.*

### INSTRUMENT RATING (Initial)

40 hrs aircraft charter Robinson R22 (IFR)	\$ 10,600
40 hrs flight instruction	\$ 2,000
20 hrs ground instruction	\$ 1,000
FAA Written Examination Fee	\$ 150
Checkride Examiner Fee	\$ 600
<b>Estimated Total</b>	<b><del>\$14,350</del> or \$ 13,950 pre-paid!</b>

*Valid FAA Rotorcraft rating required for Initial Instrument Rating. Previous instrument hours may be credited towards this rating.*



### FLIGHT INSTRUCTOR RATING (Initial)

20 hrs aircraft charter Robinson R22	\$ 4,900
20 hrs flight instruction	\$ 1,300
15 hrs ground instruction	\$ 750
FAA Written Examination Fee (FOI & CFI)	\$ 300
Checkride Examiner Fee	\$ 950
<b>Estimated Total</b>	<b><del>\$8,200</del></b>

*Valid FAA Commercial Rotorcraft license required for Instructor Rating. Three hours necessary in order to fulfil requirements for this rating; however, 20 hours are recommended in preparation for the checkride.*

### AIRLINE TRANSPORT PILOT

10 hrs aircraft charter Robinson R22 (IFR)	\$ 2,650
10 hrs flight instruction	\$ 500
5 hrs ground instruction	\$ 250
FAA Written Examination Fee	\$ 150
Checkride Examiner Fee	\$ 1,000
<b>Estimated Total</b>	<b><del>\$4,550</del></b>

*Valid FAA Commercial & Instrument Rotorcraft rating required for ATP. Refer to 14 CFR FAR Part 61.161 for more information.*

AN IFR RATING MAKES YOU MORE EMPLOYABLE!

NOTE: Prices are subject to change and may vary with student flying skills and learning abilities (numbers reflect FAA Minimums). Training is subject to aircraft availability and weather. Weight limits apply - Candidates over max. allowable seat weight may use an R44 as an alternate training aircraft at additional costs. A 3.25% (MC, Visa, Discover) or 4.0% (American Express) fee is added to all plastic card transactions. Additional fees (such as fuel surcharges; pre-/ postflight fees; etc.) may apply. Issued on 01/2019.



# START INTO A FLYING CAREER: PILOT CAREER PROGRAMS



PILOT PROGRAM I *	
Private Pilot Certificate Commercial Pilot Certificate	
---	
<b>ESTIMATED FLYING EXPERIENCE:</b>	
Total Time:	150 hrs
PIC Time:	120 hrs
Instrument:	5 hrs
Dual:	70 hrs
Solo:	80 hrs
Written Exams:	2
Checkrides:	2
<b>\$44,100</b> Pay as you go. NO upfront payments necessary. Discounts may apply.	
<b><u>Estimated Duration:</u></b> Approx. 8 to 10 weeks	

PILOT PROGRAM II *	
Private Pilot Certificate Commercial Pilot Certificate Flight Instructor Rating	
---	
<b>ESTIMATED FLYING EXPERIENCE:</b>	
Total Time:	155 hrs
PIC Time:	125 hrs
Instrument:	5 hrs
Dual:	85 hrs
Solo:	70 hrs
Written Exams:	4
Checkrides:	3
<b>\$47,375</b> Pay as you go. NO upfront payments necessary. Discounts may apply.	
<b><u>Estimated Duration:</u></b> Approx. 12 to 14 weeks	

PILOT PROGRAM III *	
Private Pilot Certificate Commercial Pilot Certificate Instrument Rating Flight Instructor Rating Flight Instructor (-Instrument) Rating	
---	
<b>ESTIMATED FLYING EXPERIENCE:</b>	
Total Time:	155 hrs
PIC Time:	125 hrs
Instrument:	45 hrs
Dual:	125 hrs
Solo:	30 hrs
Written Exams:	6
Checkrides:	5
<b>\$53,850</b> Pay as you go. NO upfront payments necessary. Discounts may apply.	
<b><u>Estimated Duration:</u></b> Approx. 16 to 18 weeks	

\*Flight numbers reflect FAA minimums and may vary with student flying skills and personal learning abilities. Discounted rates may apply with cash downpayments of at least \$5k and more. Student should budget additional \$2,000-\$5,000 for applicable fees (such as Pre-/ Postflight surcharges, additional re-testing fee after a failed exam, additional training hours to meet PTS standards, etc.). Training is subject to aircraft availability and weather conditions. Weight limitations apply.

**HIGHEST RATING**  
This Course gives you the highest employment potential!







## Still undecided...?



Book an introductory flying lesson and take the controls with an experienced instructor by your side! The ultimate thrill and adrenaline rush that's sure to bring a smile to your face! Book online at [www.heliaf.com/tours](http://www.heliaf.com/tours)

1/2-hour \$ 159

1-hour \$ 295

Contact us now to get started or  
to schedule a free consultation.

Heli Aviation Florida, LLC  
Phone (941) 355-1525 | Fax (941) 355-1521 | [info@heliasf.com](mailto:info@heliasf.com) | [www.heliasf.com](http://www.heliasf.com)

**SOUTHEAST U.S. BASE:**

SARASOTA-BRADENTON INTL. AIRPORT (KSRQ)  
8191 N Tamiami Trail, Hangar B1 | Sarasota, FL 34243 | United States

**CENTRAL U.S. BASE:**

ROCKY MOUNTAIN METROPOLITAN AIRPORT (KBJC)  
11705 Airport Way | Broomfield, CO 80021 | United States